

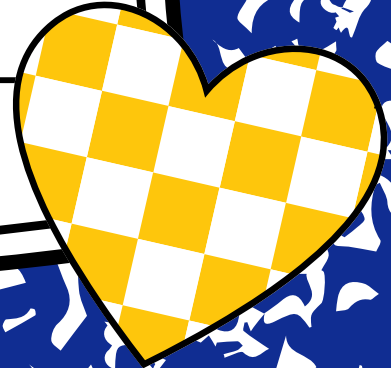


District

Convention 101

March 21-22, 2025

TΒΣ & ΚΚΨ



Overview



Convention Details & Prep

What is Convention? **

What do I do before SEDC? **

Location

Planning a Trip with your Chapter

** These sections are great for first timers and also to review

Packing

Packing Checklist

At Convention

How do I get the most out of SEDC? **

Marketplace

Options in Atlanta of where to eat!

Delegate 101 **

Attendee 101 **

[Link to Tau Beta](#)

[Link to Kappa Kappa](#)

[Sigma SED website](#)

[Psi SED website](#)

[SEDC Website](#)

If you have any questions feel free to reach out to the SED Councils!

What is SEDC?

Each District contains an elected corps of officers and has an appointed advisor, known as a Governor for Kappa Kappa Psi and a Counselor for Tau Beta Sigma.

Districts allow local chapters in a region to develop a closer relationship fostered through various District functions and an annual convention.

Hosted by chapters within the District, these conventions allow chapters to generate programs and policies. Often, the ideas that are shared at District Conventions are then discussed on a national level.

From: <https://www.tbsigma.org/districts/>

SEDC or Southeast District Convention is where:

- The district meets to elect a new Executive Council
- Discuss District Business
- Network with Sisters and Brothers
- Learn more at workshops
- Honor deserving individuals with honorary membership for the district
- Sneak peek of national convention and next year's SEDC
- Have the chance to meet National Executive Council of TBS/KKΨ

Before SEDC

You can be active, Conditional, Alumni, or even a candidate to register for the convention!!

Make sure to get these things done:

- Registration
- Housing Accommodation
- Transportation (CARPOOL if possible)
- Practice ritual songs and etiquette

REGISTER!

Convention registration is now open!

- Early registration is until Friday and is \$80
- On time (February 22-March 12): \$90
- Late (March 13-18): \$105

By registering on time you will be guaranteed to have a seat at the banquet!

Location of SEDC 2025

Courtland Grand in Atlanta, Georgia
165 Courtland Street NE, Atlanta, GA
30303

There is no self parking available at the hotel but there are several options across the street and in the nearby area but these areas are to be parked in at your own risk.

Each non-smoking guest room features a mini-refrigerator with no freezer, coffee/tea maker, flat-screen TV, desk, safe, ironing amenities, hair dryer, and bath products.

The lodging rate at this hotel starts at \$139 per night for Double Beds and Queen Beds. They offer valet services for a reduced rate of \$38 per night for the convention. They have multiple dining options including Collage - Breakfast Buffet, The Cafe - Grab and Go, and Fandangles - Southern Comforts, American Cuisine, and International Dishes.

Booking the room under the reduced \$139 per night? Be sure to book your room by March 2nd!

From: <https://www.kkymbssedc.com/venue>

Planning with your Chapter

Have sisters who are interested join a group chat, and make sure to have interests notated (100% interested vs slightly interested) so that you can budget for the best and worst possible scenario. You could also have people pay the chapter for the hotel (so you can do it in installments) making it easier for both you and the chapter at large to go to these conventions.

Interest Poll - Send this out as early as possible, even if it is to gauge slight interest so that people can plan money wise and have it in the back of their mind! Be sure to talk about this in chapter.

Group Chat - MAKE THIS ASAP so that all communication regarding Conventions can be sent through here as well as to the chapter. You will thank yourself later.

Cost Breakdown - You could do this through a post on whatever platform your chapter uses, in chapter/GBM's, or both! Just breaking down the total cost for each person. Make sure to account for Hotel, Gas, Food, Merch, and anything else you can think of. OVERDOING this is SOOOO much better than under-doing this.

Constant Reminders - Remind people at chapter and make sure to be available for questions or concerns.

Booking the Hotel - Having people pay up front and then using the chapter card is so much easier so that nobody is out of money. This also allows for installment plans to be put in place if needed.

Arranging Rides - Conventions can be pretty far away, so having drivers that are willing and able to travel to these conventions is a must. You can make a spreadsheet, or people can do this in the group chat.

Packing Checklist

Ritual attire & membership pin

Instrument if participating in the music hour

Clothes for the trip!! (rep your letters)

Hotel check-in info

Socks and comfy walking shoes!

Toiletries

Medicine

Electronics/Chargers

Notebook so you can take notes

Umbrella in case it rains

Jacket/sweater

Snacks

Banquet Attire (masquerade)

Money for food, gas, & merch!

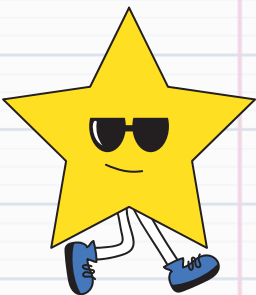


Getting the Most out of SEDC!

1. Go to as many workshops as possible!! It is a great way to expand your knowledge as a sister and bring back information to your chapter!!
2. Take care of yourself - Eat, sleep, and stay hydrated!! Convention days are long, and you also need to take care of yourself so that you can have a great experience!!
3. Network!! - Don't be afraid to talk to those in other chapters! We are all ITB, so do not be afraid to mingle!
4. Go to open committee meetings if you can! - This is a great way to have your voice heard in our district, and possibly make change!

Marketplace

Vendors and chapters will have tables you can shop from!



These shops will be closed during workshops so you all can get the most of convention!!

Where to eat in ATL

The Hub at Peachtree Center Restaurant Options

There is also a few options in the hotel:

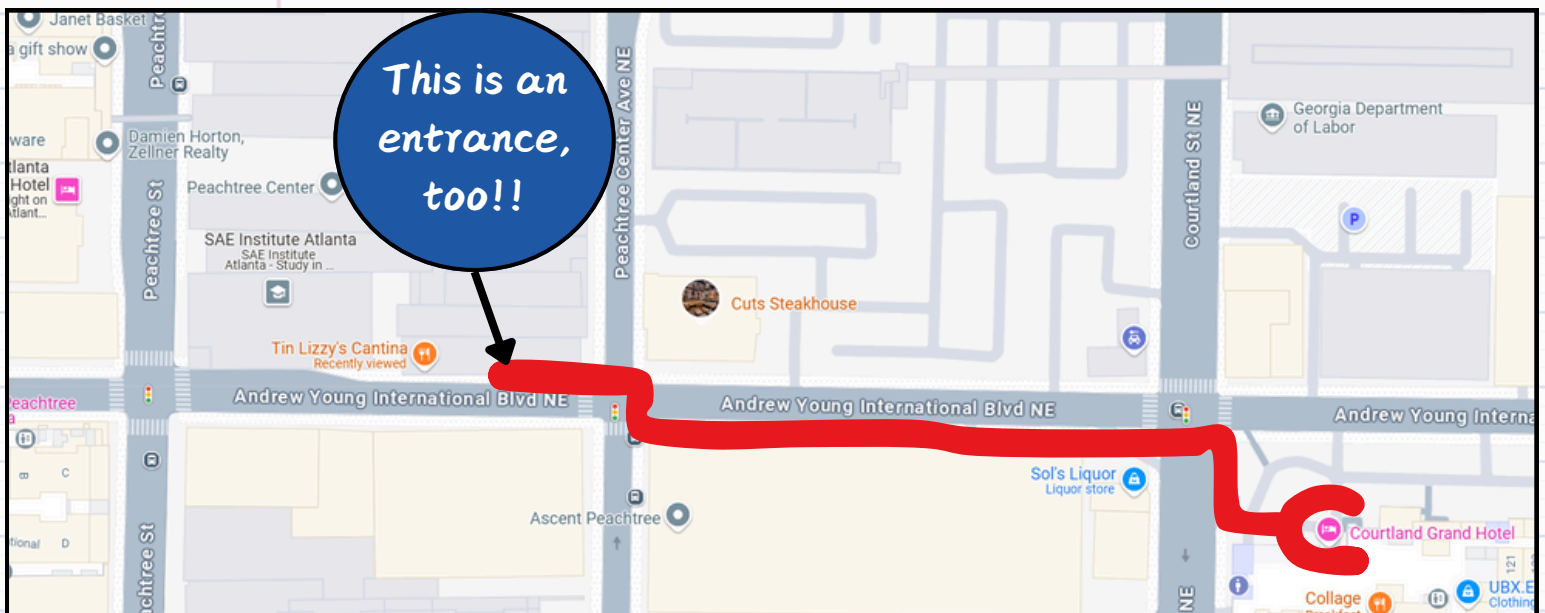
Fandangles
Lunch/Dinner

Collage
Breakfast

The Cafe
Starbucks options
and grab-and-go
snacks and drinks

Planet Smoothie	Hsu's Gourmet Chinese
Roman Delight Pizza	Metro Café Diner
Salata	Tin Lizzy's
Southern Candy Co	Aviva by Kameel
Taste of India	Beni's Cubano Robust
Willy's Mexicana Grill	BEP!
Yami Yami	Bistro 7
Gus's Famous Fried Chicken	Café Momo
Caribou Coffee	Freshii Fresh
Checkers	Gibney's Pub
Chick-fil-A	GLC Café
Dairy Queen	Great Wraps Grille/T.J.'s Subs
Farmer's Basket	Last Stop Snack Shop
Firehouse Subs	Metro Café Diner
Panbury's Pie	Noodle Café

Directions from the hotel



Delegate 101

If the delegate/proxy form is not submitted, there will be another sister from a chapter (based on the previous year's ending chapter) that will represent the chapter

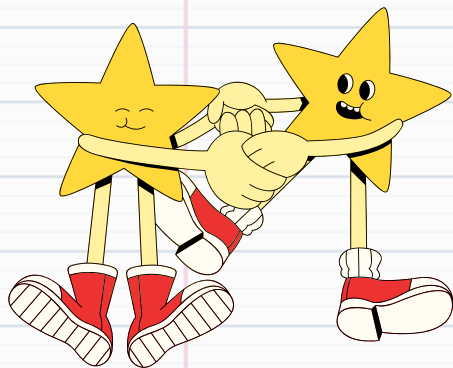
Delegates represent a chapter at the District Convention

Delegates will be assigned a committee and will voice their opinion in voting matters in separate (just your respective org) and joint sessions (with both orgs)

From: <https://www.tbsigma.org/districts/>

Attendee 101

You get a more chill experience and are able to experience Atlanta!



You are able to participate in events throughout the Convention!

